



Landscape Management

Portishead Down Public Open Spaces

North Somerset Council

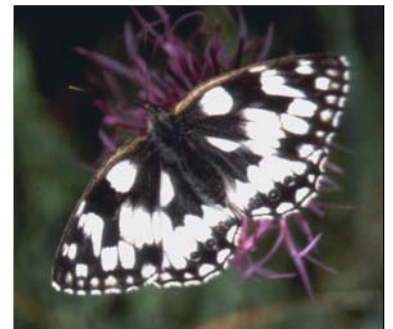
To enable expansion of Portishead the Local Authority identified a green field site to the south of the town which contained a number of significant hedgerows, mature oak trees and semi-improved meadows.

Landmark was employed to advise both the Local Authority and the developers on the technical and financial implications of retaining remnants of this countryside as public open space within the future residential fabric, and to draw up and implement a Management Plan over an initial five year period.

The aim of the management regime at Portishead Down was twofold; to retain and enhance the value of the open spaces for wildlife, whilst also providing accessible and attractive spaces for local residents. To inform future management decisions, a programme of ecological survey work was undertaken. Liaison with residents was a high priority, achieved via newsletters and personal contacts.

Landmark's unique combination of expertise allowed it to deal with all aspects of site management from aiding site procurement, to practical issues such as maintenance of wildflower meadows, laying of hedges and litter collection, to responding to residents concerns. Wildlife is now thriving on the site.

Public appreciation of a management strategy which combines community use of open space with wildlife conservation.



Project

Client

Background

Description

Client benefits